

ACCEPTED

FOR REGISTRATION

August 7, 2023

DOC ID 588324

New York State Department
of Environmental Conservation
Division of Materials Management
Pesticide Product Registration



The logo features a stylized lightning bolt icon above the text "STRIKE MAX" in a bold, sans-serif font. Below this, the word "ALACCR" is written in a very large, bold, sans-serif font, with a horizontal line passing through the middle of the letters. Underneath "ALACCR", the words "ANT GEL BAIT" are written in a smaller, bold, sans-serif font. All text is in black.

1.06 oz. (30 g) Net Weight

Contains 0.05% Indoxacarb

Non-refillable Container

**KEEP OUT OF REACH OF CHILDREN
CAUTION**

Have the product container or label with you when calling a poison control center or doctor or going for treatment. You may also contact SafetyCall® International for emergency medical treatment at (866) 897-8050.

Refer to the full label for use directions, precautionary statements and Storage and Disposal.

EPA Reg. No. 53883-466-82540

EPA Est. No. 071106-GA-003

STRIKE MAX™ ALACER™ ANT GEL BAIT

INDOXACARB [GROUP 7] IA INSECTICIDE

ACTIVE INGREDIENT:

Indoxacarb* 0.05%

OTHER INGREDIENTS: 99.95%

TOTAL: 100.00%

*Indoxacarb belongs to the oxadiazine chemical class.

Manufactured for:
Target Specialty Products, 15415 S. Marquardt Ave, Santa Fe Springs,
CA 90670

EPA Reg. No: 53883-466-82540, EPA Est. No: 071106-GA-003
Net Contents: 1.06 oz. (30 g)

KEEP OUT OF REACH OF CHILDREN CAUTION

Have the product container or label with you when calling a poison control center or doctor or going for treatment. You may also contact SafetyCall® International for emergency medical treatment at (866) 897-8050.

See side/back/inside panel(s) for Precautionary Statements, Directions for Use and Storage and Disposal.

PRECAUTIONARY STATEMENTS

HAZARDS TO HUMANS AND DOMESTIC ANIMALS

CAUTION: Wash thoroughly with soap and water after handling and before eating, drinking, chewing gum, or using tobacco. Prolonged or frequently repeated skin contact may cause allergic reactions in some individuals.

DIRECTIONS FOR USE

It is a violation of federal law to use this product in a manner inconsistent with its labeling.

READ ALL DIRECTIONS COMPLETELY BEFORE USE.

Strike Max Alacer Ant Gel Bait is applied as a crack and crevice or spot treatment to indoor or outdoor sites where ant infestations are a problem.

Kills ants* in and around residential, institutional, commercial and industrial areas. These sites include inside residential buildings (including apartments and single and multi-family buildings), commercial and industrial facilities (including warehouses, supermarkets, restaurants, motels, hotels, hospitals & nursing facilities, zoos, food handling/storage establishments), schools, day care facilities, transportation equipment (including aircraft, trains, ships, boats, cars, trucks, semi trucks, and buses) and other similar sites where ant infestations or activity can be problematic. *except Pharaoh ants

Strike Max Alacer Ant Gel Bait is specifically formulated to be attractive to all* major pest species of ants. This product kills ants* such as Acrobat, Argentine, Big-Headed, Carpenter, Cornfield, Crazy, Field, Ghost, Honey, Little Black, Odorous House, Pavement, Pyramid, Red Imported Fire Ant, Rover, Thief and White-footed. For complete control of outdoor nests of Harvester and Red Imported Fire Ants, use additional treatments labeled for outdoor management of these pest species.

*except Pharaoh

USE RESTRICTIONS:

- **DO NOT** treat areas that are easily accessible to children, domestic animals and pets.
- **DO NOT** apply to surfaces that food contacts.
- **DO NOT** allow open foods to contact gel material.

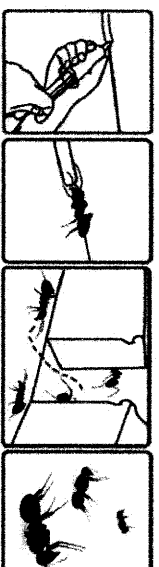
USE PRECAUTIONS:

- Avoid applying Strike Max Alacer Ant Gel Bait to surfaces recently treated with repellent residual sprays.
- **DO NOT** apply repellent residual sprays to surfaces treated with Strike Max Alacer Ant Gel Bait.

APPLICATION INSTRUCTIONS AND USE RATES

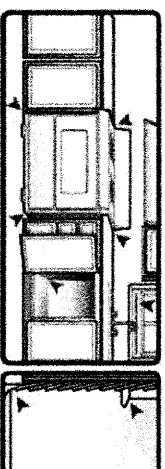
- Strike Max Alacer Ant Gel Bait may be applied as spots or small beads of gel.
- Spots or beads of gel should be applied to areas where ants are active, to foraging trails, or nest sites.
- For spot applications: apply 0.1 to 1.0 gram of Strike Max Alacer Ant Gel Bait per spot. Spots should be approximately ¼" in diameter. Make as many placements as necessary.
- For bead applications: apply Strike Max Alacer Ant Gel Bait as a bead approximately 1/8" wide and 2" long; for highly active foraging trails, extend the bead up to 3".
- When making applications of gel, avoiding disrupting the natural foraging of ants.
- If the ant nest can be located, inject up to 2.0 grams of bait directly into the nest or harborage entrance.
- For applications into commercially available refillable bait stations, apply only an appropriate amount of Strike Max Alacer Ant Gel Bait so the bait does not spill from the station and the station is not over-filled.
- After application, inspect bait placements for consumption/activity. If needed, apply additional Strike Max Alacer Ant Gel Bait and reapply bait in the same location if all the bait is consumed or in a different area if new ant activity is observed.

HOW IT WORKS



1. Apply to cracks and crevices. 2. Ants enter the bait station. 3. They return to the nest to die. 4. Ants die in 2-4 hours.

WHERE IT WORKS



INDOOR APPLICATION DIRECTIONS

- Carefully inspect infested areas to determine infestation levels, where ants are foraging, nesting sites, and specific areas where bait should be applied.
- Bait should be applied indoors into cracks and crevices along walls, ceilings or floors, cabinets, behind or under equipment or appliances, under tables, within framing of tables or furniture, around sinks, within or near garbage collection areas, attics, or other inaccessible areas indoors.
- Bait applications may also be made between elements of construction, behind baseboards or molding, at openings into voids, and within hollow spaces in equipment bases and legs, near sinks or stoves, and in bathrooms.
- If using refillable bait stations, place the stations where ants are foraging or near their trails or nests. Inspect gel placements regularly and replace gel with fresh gel as needed.

APPLICATIONS IN FOOD/FEED HANDLING AREAS

Apply Strike Max Alacer Ant Gel Bait only as a crack and crevice application to food/feed areas of food/feed handling establishments. Applications may be made while the facility is in operation. Place the bait dispenser directly into the crack or crevice, hole or other similar opening where ants are found or suspected and dispense bait. Food and feed handling areas for receiving, storage, packing (canning, bottling, wrapping, boxing), preparing edible waste storage, and enclosed processing systems (mills, dairies, edible oils, syrups). Serving areas are also considered a food/feed area when food is exposed, and facility is in operation. Use good application practice to avoid movement of Strike Max Alacer Ant Gel Bait to exposed surfaces used for food preparation.

Food/feed Handling Use Restrictions:

- **DO NOT** apply Strike Max Alacer Ant Gel Bait to areas where food/feed, food utensils or food processing surfaces may come into contact and become contaminated.
- **DO NOT** apply Strike Max Alacer Ant Gel Bait to areas that are routinely washed such as cracks and crevices in tops of tables, food/feed preparation and prepared food holding surfaces as bait could be removed by the washing.
- **DO NOT** apply Strike Max Alacer Ant Gel Bait to surfaces where the temperature exceeds 120 - 130°F because this could cause the bait to liquify and lose effectiveness.
 - * Examples include, but are not limited to, heat producing equipment, parts of stoves, ovens, grills, furnace hoods, saunas, heat lamps, coffee urns, steam tables, toasters, fryers, dishwashers, and hot water pipes.

If Strike Max Alacer Ant Gel Bait contacts an exposed surface, first remove as much of the gel bait as possible, then wash area with soap and water.

APPLICATIONS IN NON-FOOD/NON-FEED HANDLING AREAS

Strike Max Alacer Ant Gel Bait can be used as a spot or crack and crevice treatment in areas inaccessible to children and pets to control ants in residential structures and the non-food/non-feed areas of commercial, industrial, public and institutional buildings/structures, including restaurants, warehouses, food processing plants, supermarkets, hospitals, nursing homes, motels, hotels, schools, laboratories, computer facilities, aircraft, buses, boats/ships, trains, pet shops and zoos.

Non-food/non-feed areas include garbage rooms, lavatories, floor drains (to sewers), entries, vestibules, offices, locker rooms, machine rooms, boiler rooms, garages, mop closets and storage (after bottling or canning).

WAX PAPER APPLICATION

For gel bait applications under appliances and other similar areas, or to protect the bait from possible existing contamination, apply the bait using 2-3" wax paper squares. Fold the wax paper in half to make a triangle and apply the 1/8" wide and 2" long bait bead in the center. Place the folded wax paper containing the bait into the appropriate bait placement location. Wax paper squares can easily be inspected, removed and/or replaced as needed.

OUTDOOR APPLICATION DIRECTIONS

- Thoroughly inspect around structures for entry points, openings, and other similar areas where ants can access and crawl in.
- If access points are identified, make effort to remove or patch to prevent entry into structure.
- Apply spots or beads of Strike Max Alacer Ant Gel Bait (see application rates for all uses) to windows, doors, between construction elements, sewer areas, adjacent ant harborage (trees, ornamental plants), along walls, garage holding areas, or other suitable placement sites.
- Apply Strike Max Alacer Ant Gel Bait to suitable areas to reduce the potential of subsequent human contact.
- After application, inspect bait placements for consumption/activity and apply fresh ant gel as needed.
- If outdoor temperatures are high, the consistency of the gel may

be affected. Inspect placements after application to determine if additional gel is needed.

STORAGE AND DISPOSAL

DO NOT contaminate water, food, or feed by storage and disposal. **PESTICIDE STORAGE:** Keep this product in its tightly closed original container. Store in a cool, dry (preferably locked) area that is inaccessible to children and animals, in such a manner as to prevent cross contamination with other pesticides, fertilizers, food and feed. **PESTICIDE DISPOSAL:** Wastes resulting from the use of this product must be disposed of on site or at an approved waste disposal facility. **CONTAINER HANDLING: DO NOT** reuse or refill this container. Offer to recycling if available. Place empty bait dispensers in trash. **If partially filled:** Call your local solid waste agency for disposal instructions. Never place unused product down any indoor or outdoor drain.

NOTICE: Read the entire Directions for Use and Conditions of Sale and Limitation of Warranty and Liability before buying or using this product. If the terms are not acceptable, return the product at once, unopened, and the purchase price will be refunded.

WARRANTY STATEMENT

The Directions for Use of this product must be followed carefully. It is impossible to eliminate all risks inherently associated with the use of this product. Ineffectiveness or other unintended consequences may result because of such factors as manner of use or application, weather, presence of other materials or other influencing factors in the use of the product, which are beyond the control of Target Specialty Products or Seller. To the extent consistent with applicable law, all such risks shall be assumed by Buyer and User, and Buyer and User agree to hold Target Specialty Products and Seller harmless for any claims relating to such factors.

To the extent consistent with applicable law, Target Specialty Products warrants that this product conforms to the chemical description on the label and is reasonably fit for the purposes stated in the Directions for Use, subject to the inherent risks referred to above, when used in accordance with directions under normal use conditions. This warranty does not extend to the use of this product contrary to label instructions, or under abnormal conditions or under conditions not reasonably foreseeable to or beyond the control of Seller or TARGET SPECIALTY PRODUCTS, and Buyer and User assume the risk of any such use. TARGET SPECIALTY PRODUCTS MAKES NO WARRANTIES OF MERCHANTABILITY OR OF FITNESS FOR A PARTICULAR PURPOSE NOR ANY OTHER EXPRESS OR IMPLIED WARRANTY EXCEPT AS STATED ABOVE.

To the extent consistent with applicable law, IT IS TARGET SPECIALTY PRODUCTS, AND SELLERS INTENTION THAT in no event shall Control Solutions or Seller be liable for any incidental, consequential or special damages resulting from the use or handling of this product. **THE EXCLUSIVE REMEDY OF THE USER OR BUYER, AND THE EXCLUSIVE LIABILITY OF TARGET SPECIALTY PRODUCTS, AND SELLER FOR ANY AND ALL CLAIMS, LOSSES, INJURIES OR DAMAGES (INCLUDING CLAIMS BASED ON BREACH OF WARRANTY, CONTRACT NEGLIGENCE, TORT, STRICT LIABILITY OR OTHERWISE) RESULTING FROM THE USE OR HANDLING OF THIS PRODUCT, SHALL BE THE RETURN OF THE PURCHASE PRICE OF THE PRODUCT OR, AT THE ELECTION OF TARGET SPECIALTY PRODUCTS OR SELLER, THE REPLACEMENT OF THE PRODUCT.**

To the extent consistent with applicable law, Target Specialty Products and Seller offer this product, and Buyer and User accept it, subject to the foregoing Conditions of Sale and Limitation of Warranty and Liability, which may not be modified except by written agreement signed by a duly authorized representative of Target Specialty Products.